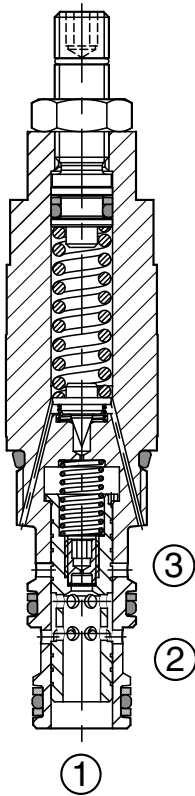
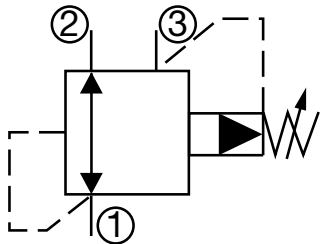


PRESSURE CONTROL VALVES

DR08P-01

Pressure Reducing/Relieving, Pilot Operated, Spool Type

16 gpm (60 l/min) • 5000 psi (350 bar)



Description

A screw-in cartridge, pilot operated, spool type, pressure reducing/relieving valve with internal pilot and internal spring chamber drain, intended for use as a pressure regulating device for secondary circuits. This valve maintains a secondary regulated/reduced pressure regardless of pressure variations in the primary system. In addition to the reducing function, this valve also provides a relief function from the reduced pressure port to the tank port, if pressure in the secondary circuit exceeds the set pressure.

Operation

The DR08P-01 allows bidirectional flow between port 2 and port 1 with the spring chamber drained through port 3. Once the pressure setting is reached at port 1, the spool shifts to restrict the flow at port 2, thereby regulating pressure at port 1. If pressure at port 1 exceeds the setting of the valve, the spool will shift further and relieve excess pressure through port 3. Any pressure at port 3 is directly additive to valve pressure setting.

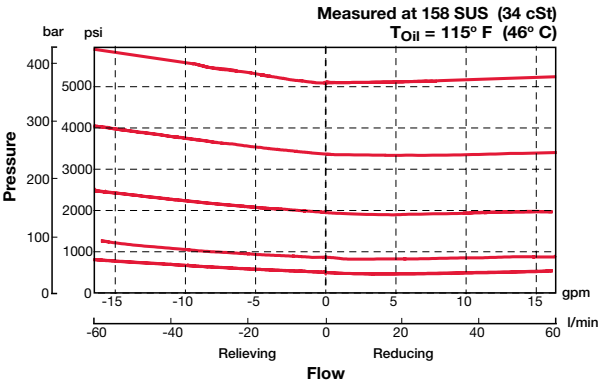
Features

- Spring ranges up to 5000 psi (350 bar)
- Positive stop prevents spring from over adjustment (options V,H)
- Adjustable under full pressure
- One-piece body maximizes reliability and minimizes the effect of eccentricity
- Screen protected control orifice to enhance safety
- Fast response with excellent stability
- All external surfaces zinc-plated
- Hardened spool & pilot poppet to ensure minimal wear & extend service life
- Industry common cavity

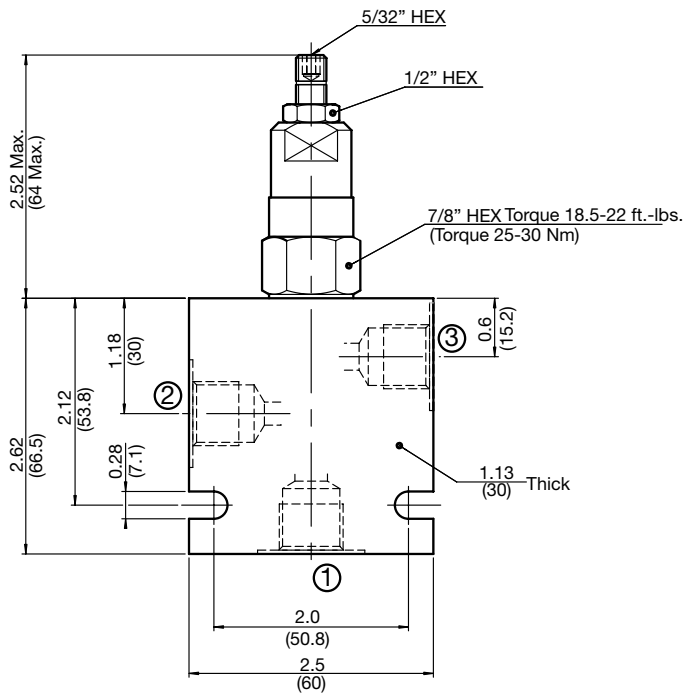
Specifications

Operating Pressure	5000 psi (350 bar)
Nominal Flow	16 gpm (60 l/min)
Optional Pressure Ranges	75 to 500 psi (5 to 35 bar) 75 to 900 psi (5 to 60 bar) 75 to 1800 psi (5 to 125 bar) 75 to 3300 psi (5 to 230 bar) 75 to 5000 psi (5 to 350 bar)
% of Spring Pressure Range Actuated at 1 Revolution (Adjustment Type V, H)	24%
Fluid Operating Temp. Range	-4° to 248°F (-20° to +120°C) (Consult factory for usage at temp. outside range.)
Fluid Compatibility	Mineral-based or synthetics with lubricating properties
Viscosity	50 to 2000 SUS (7.4 to 420 cSt)
Filtration	21/19/16 or cleaner (per ISO 4406). Use with filter rated $\beta_{10} \geq 200$.
Installation	No orientation restrictions
Cavity	FC08-3 (see Line Bodies & Cavities section)
Cavity Tools	Rougher: 02580086 Finisher: 02580087
Cartridge Weight	0.38 Lbs. (0.170 kg)
Cartridge Material	Steel with hardened work surfaces. Zinc-plated exposed surfaces. Anodized aluminum knobs. (option H) Buna N or Viton® o-rings, and PTFE back-up rings.
Seal Kits	Buna-N P/N: 03054795 Viton® P/N: 02591059

Performance



Dimensions



Model Code

DR08P-01-C-N-180 V 100

Valve Model

Body & Ports

- C = Cartridge only
- AS6 = SAE-6 ports, aluminum body
- SS6 = SAE-6 ports, steel body

Seals

- N = Buna-N
- V = Viton®

Adjustment Range

- 050 = 75 to 500 psi (5 to 35 bar)
- 090 = 75 to 900 psi (5 to 60 bar)
- 180 = 75 to 1800 psi (5 to 125 bar)
- 330 = 75 to 3300 psi (5 to 230 bar)
- 500 = 75 to 5000 psi (5 to 350 bar)

Adjustment Options

- F = Factory pre-set, non-adjustable
(must specify setting below)
- H = Knurled Hand Knob
- K = Allen Head (HEX 5/32") w/ cover cap
- V = Allen Head (HEX 5/32")

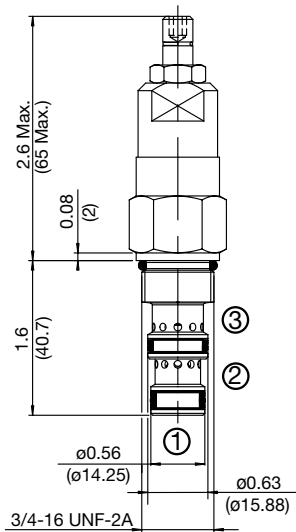
Setting (optional)

- (omit) = Set at min. pressure for the range
- XXX = Desired psi ÷ 10

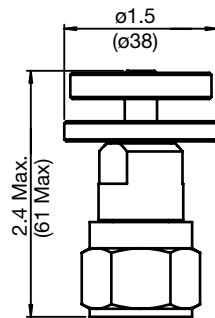
Example: 100 = 1000 psi

Adjustment Options

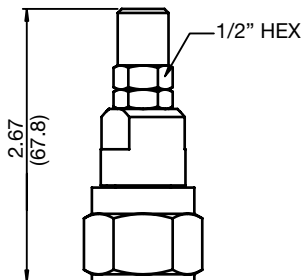
'V' - Allen Head (std)



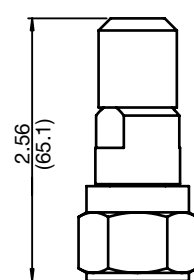
'H' - Hand Knob



'K' - Protective Cap



'F' - Tamper Proof Cap



All measurements in inches (mm).
Subject to technical modifications

Standard Line Bodies*

Code	Part No	Material	Pressure Rating	Weight
FH083-AS6	03011424	Aluminum, anodized	3500 psi (245 bar)	0.58 lb (0.26 kg)
FH083-SS6	00560920	Steel, Zinc plated	6000 psi (420 bar)	1.70 lb (0.77 kg)

*Please refer to Line Bodies & Cavities section for details